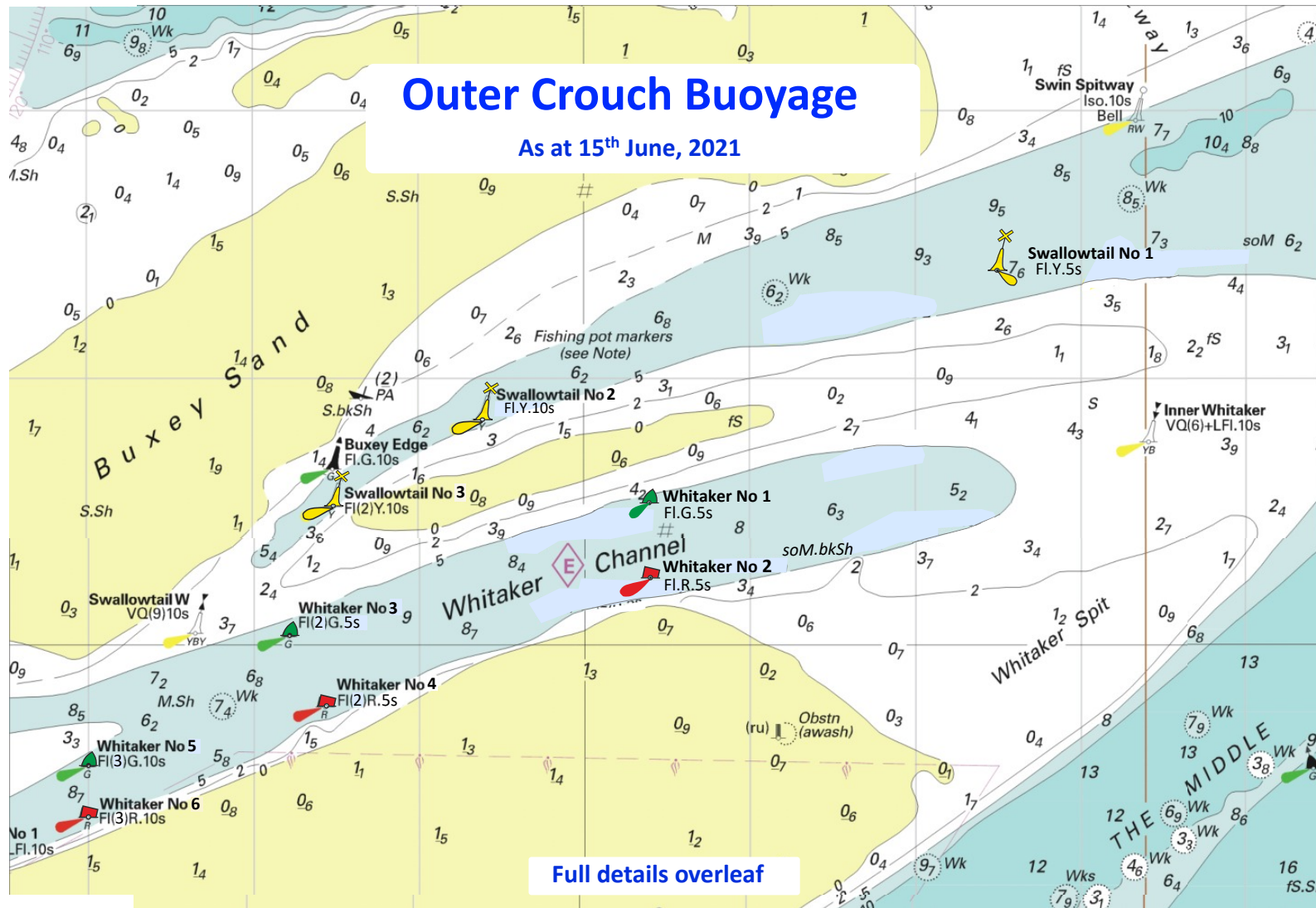


# Outer Crouch Buoyage

As at 15<sup>th</sup> June, 2021



Full details overleaf

## Buoy Changes in Swallowtail and Whitaker Navigation Channels

With effect from 15<sup>th</sup> June, 2021

Following the annual maintenance round, the Crouch Harbour Authority has altered the buoyage in the Swallowtail and Whitaker channels. Effectively the overall arrangement for the buoyage remains as before except that three buoys have been withdrawn and some positions, light characteristics and names have been amended.

### Swallowtail Channel

- **Swallowtail No 1 LT Buoy** has been moved to a new position of: **51° 41.400N - 001° 07.500E**. Colour, top mark and light characteristic Fl. Y. 5s remain unchanged.
- **Swallowtail No 2 LT Buoy** has been permanently withdrawn from **51°41.184N 001°06.296E**
- **Swallowtail No 3 LT Buoy** in position **51°40.843N 001°04.391E** has been renamed Swallowtail No 2. New light characteristic is Fl. Y. 10s. Colour, shape and top mark remain unchanged.
- **Swallowtail No 4 LT Buoy** in position **51°40.519N 001°03.487E** has been renamed Swallowtail No 3. Light characteristic unchanged Fl. (2) Y. 10s. Colour, shape and top mark remain unchanged.

### Whitaker Channel

- **Whitaker No 1 LT Buoy** has been moved to a new position of **51°40.530N 001°05.400E**. Shape, colour, top mark and light Fl. G. 5s. remain unchanged.
- **Whitaker No 2 LT Buoy** has been moved to a new position of **51°40.250N 001°05.400E**. Shape, colour, top mark and light Fl. R. 5s remain unchanged.
- **Whitaker No 3 LT Buoy** has been permanently withdrawn from **51°40.424N 001°04.719E**
- **Whitaker No 4 LT Buoy** has been permanently withdrawn from **51°40.161N 001°04.912E**
- **Whitaker No 5 LT Buoy** in position **51°40.038N 001°03.217E** has been renamed Whitaker No 3 LT Buoy. New light characteristic is Fl. (2) G. 5s. Shape, colour and top mark remain unchanged.
- **Whitaker No 6 LT Buoy** in position **51°39.757N 001°03.478E** has been renamed Whitaker No 4 LT buoy. New light characteristic is Fl. (2) R 5s. Shape, colour and top mark remain unchanged.
- **Whitaker No 7 LT Buoy** in position **51°39.540N 001°02.000E** has been renamed Whitaker No 5 LT Buoy. New light characteristic is Fl. (3) G. 10s. Shape, colour and top mark remain unchanged.
- **Whitaker No 8 LT Buoy** in position **51°39.351N 001°02.000E** has been renamed Whitaker No 6 LT Buoy. New light characteristic is Fl. (3) R. 10s. Shape, colour and top mark remain unchanged.

The chartlet is courtesy of Imray Chart Y17.