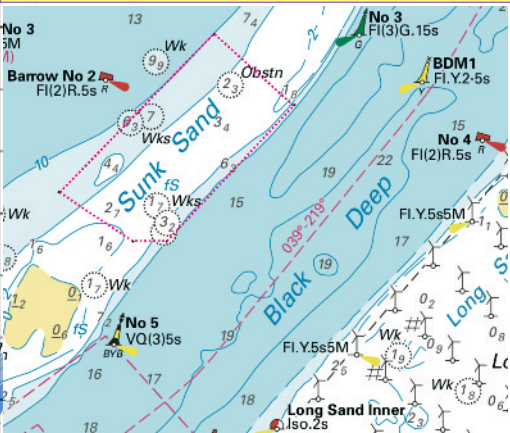


The Little Sunk



Notes

Depths in metres reduced to CD based upon Port of London Authority live tide gauges. Positions relate to WGS84

9892 Soundings taken on 10.07.2023 reduced to Chart Datum.

Chart extract courtesy of Imray (Chart C1)

Caution
Soundings taken on leisure equipment. Whilst every care has been taken in the preparation of this data, it cannot be guaranteed that these depths will remain.

The magenta circles mark five wrecks and one obstruction as recorded on the UK Hydrographic Office Admiralty Chart 1975 dated 19th January, 2019, Edition 31

51° 40.80' N

(C) R.Gaspar 2023:
www.crossingthamesestuary.com
'Little Sunk 2023 Download V1'



51° 40.50' N