

# M57-24

Cathryn Spain, Senior Harbour Master

Published: 05/08/2024

Expires: 13/12/2024

Lower Pool



## King Edward Memorial Park CSO Diversion

### NOTICE TO MARINERS

## King Edward Memorial Park CSO Diversion

Mariners are advised that from 19th August 2024 and for a period of approximately four months the Tideway Tunnel Combined Sewer Outfall (CSO) at the King Edward Memorial Park site will be diverted to the river.

During this period the CSO may discharge rain-water and untreated sewage into the river whenever there is, or has recently been, rain in the local catchment area. The discharge amount and velocity will vary but during a storm this could be up to 6 knots, lessening the further from the outfall you are (example modelled flow velocities are included at the end of this Notice). Manoeuvrable motorised vessels travelling within the navigable channel will likely feel little effect.

The approximate location of the CSO on the King Edward site is shown in red on the chartlet below.

Telephone calls, VHF radio traffic, CCTV and radar traffic images may be recorded in the VTS Centre

Port of London Authority  
London River House, Royal Pier Road,  
Gravesend, Kent DA12 2BG

This Notice may be amended or withdrawn at any time. To check the validity of this notice, scan the QR code or visit [pla.co.uk/notices](https://pla.co.uk/notices)



# M57-24

Cathryn Spain, Senior Harbour Master

Published: 05/08/2024

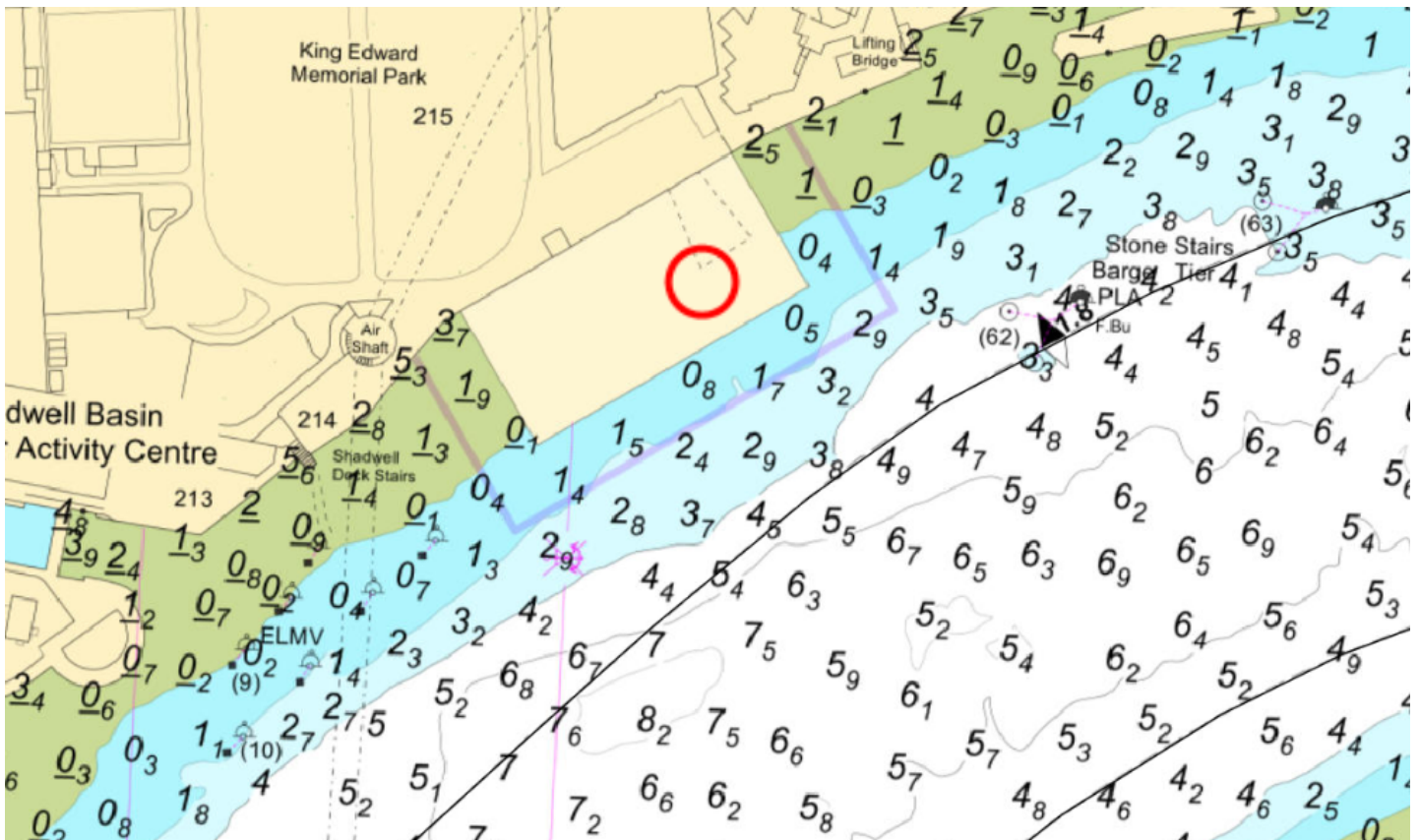
Expires: 13/12/2024

Lower Pool



## King Edward Memorial Park CSO Diversion

### NOTICE TO MARINERS



A set of warning lights will be mounted vertically in front of a black backboard on the cofferdam above the CSO. The lights will flash a yellow alternating 1 second pattern, visible day and night from 045° to 315° at a range of up to 200m, whenever the CSO is discharging or likely to discharge. Tideway advise the lights will activate approximately 8 minutes before any discharge will occur.

Telephone calls, VHF radio traffic, CCTV and radar traffic images may be recorded in the VTS Centre

Port of London Authority  
London River House, Royal Pier Road,  
Gravesend, Kent DA12 2BG

This Notice may be amended or withdrawn at any time. To check the validity of this notice, scan the QR code or visit [pla.co.uk/notices](http://pla.co.uk/notices)



# M57-24

Cathryn Spain, Senior Harbour Master

Published: 05/08/2024

Expires: 13/12/2024

Lower Pool



## King Edward Memorial Park CSO Diversion

### NOTICE TO MARINERS



Telephone calls, VHF radio traffic, CCTV and radar traffic images may be recorded in the VTS Centre

Port of London Authority  
London River House, Royal Pier Road,  
Gravesend, Kent DA12 2BG

This Notice may be amended or withdrawn at any time. To check the validity of this notice, scan the QR code or visit [pla.co.uk/notices](https://pla.co.uk/notices)



# M57-24

Cathryn Spain, Senior Harbour Master

Published: 05/08/2024

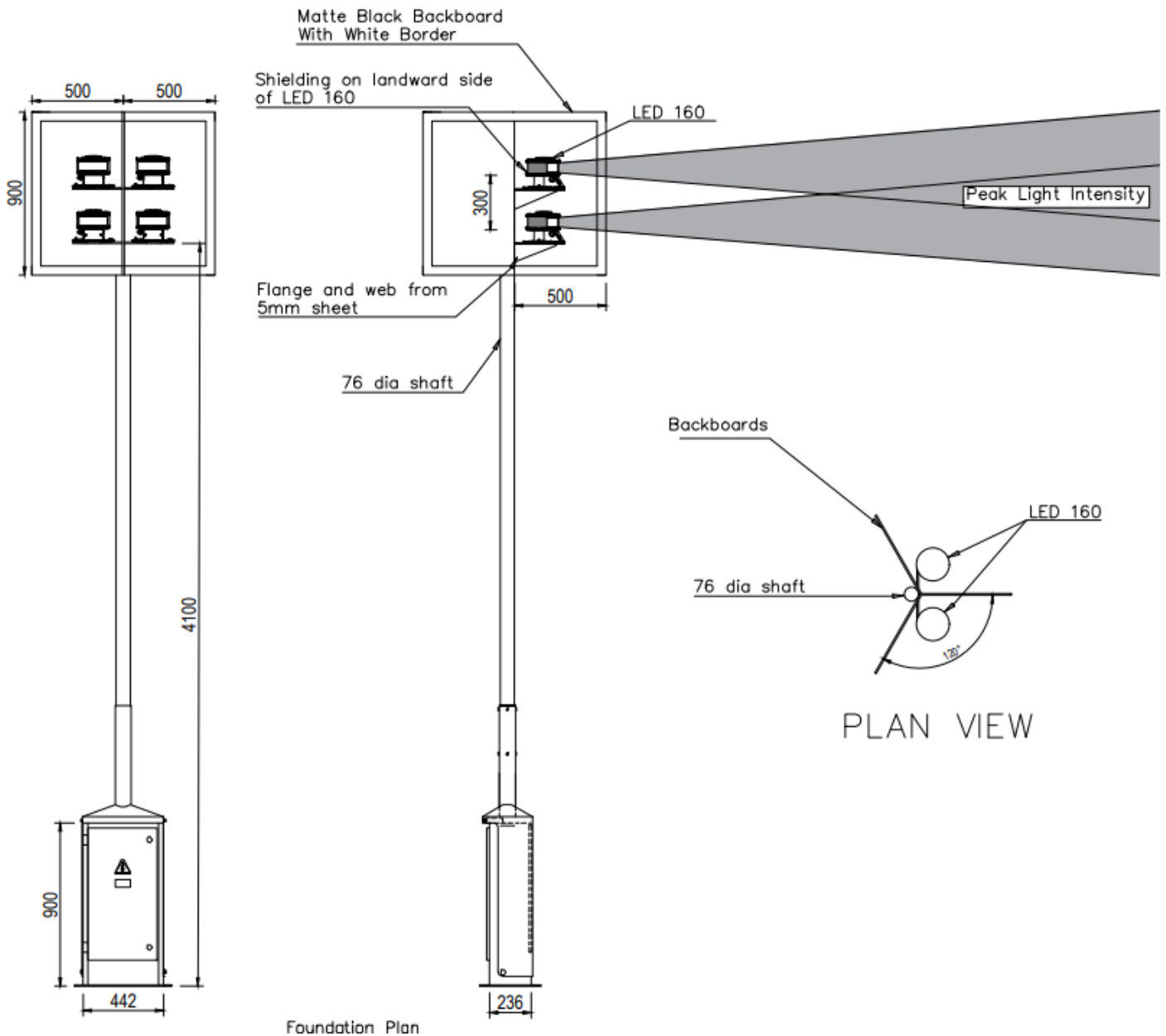
Expires: 13/12/2024

Lower Pool



## King Edward Memorial Park CSO Diversion

### NOTICE TO MARINERS



Telephone calls, VHF radio traffic, CCTV and radar traffic images may be recorded in the VTS Centre



# M57-24

Cathryn Spain, Senior Harbour Master

Published: 05/08/2024

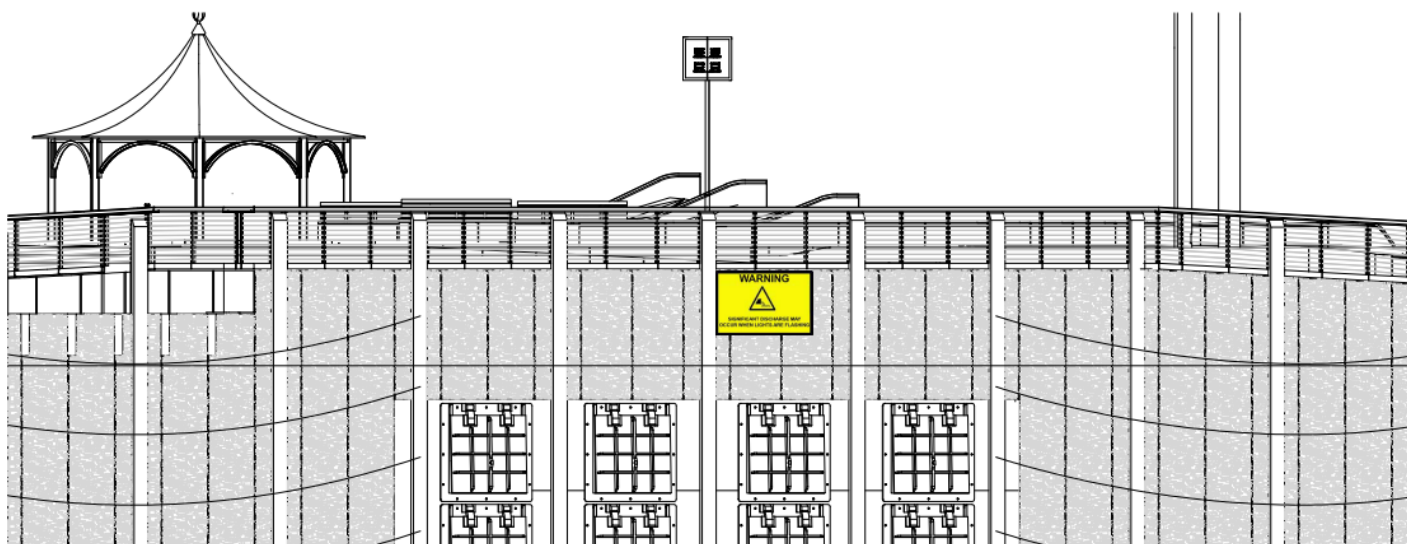
Expires: 13/12/2024

Lower Pool



## King Edward Memorial Park CSO Diversion

### NOTICE TO MARINERS



A broadcast will be made by London VTS on VHF Ch 14 and a Navigation Warning will be issued to those registered to receive Notice to Mariners and displayed prominently on the PLA website when Tideway advise that the CSO is discharging or is likely to discharge shortly.

Routine VTS broadcasts will also include a warning if Tideway inform us there is a likelihood there will be a discharge within the next hour from the site.

Human powered recreational craft, lower powered vessels and craft engaged in towing are advised to avoid the area over the slack water period (around two hours over low water and an hour over high water) if there has been heavy rain or if there is a Met Office Amber or Red weather warning for rain or storms in force for the London area.

After this four-month period it is expected that the CSO will be fully connected to the main Tideway Tunnel which will reduce the number of these discharges directly into the river to approximately 3-4 a year. A new

Telephone calls, VHF radio traffic, CCTV and radar traffic images may be recorded in the VTS Centre



# M57-24

Cathryn Spain, Senior Harbour Master

Published: 05/08/2024

Expires: 13/12/2024

Lower Pool



## King Edward Memorial Park CSO Diversion

### NOTICE TO MARINERS

Notice will be issued at a later date to advise of permanent Tideway Tunnel operations.

All mariners are advised to exercise caution when passing the site, remain outside of the works area (marked in purple on the chart) and to pay attention to warnings given.

#### **Example discharge plumes and velocities in m/sec for a 5 year return period discharge**

**(1 m/sec = 1.94 knots)**

Telephone calls, VHF radio traffic, CCTV and radar traffic images may be recorded in the VTS Centre



# M57-24

Cathryn Spain, Senior Harbour Master

Published: 05/08/2024

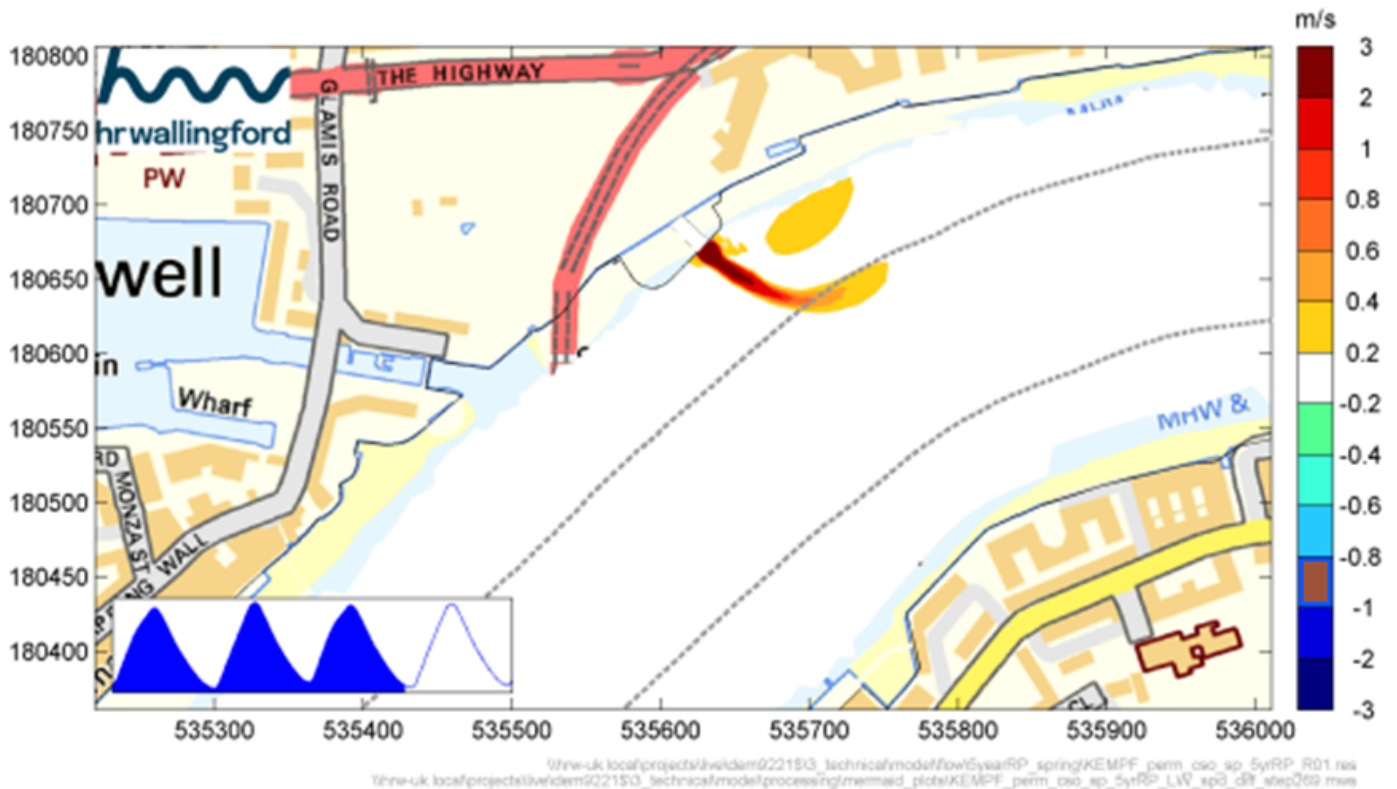
Expires: 13/12/2024

Lower Pool



## King Edward Memorial Park CSO Diversion

### NOTICE TO MARINERS



**Figure B.144: 5 year RP event spring tide current differences, 60 mins before LW slack**  
Source: HR Wallingford Ltd

Telephone calls, VHF radio traffic, CCTV and radar traffic images may be recorded in the VTS Centre



# M57-24

Cathryn Spain, Senior Harbour Master

Published: 05/08/2024

Expires: 13/12/2024

Lower Pool



## King Edward Memorial Park CSO Diversion

### NOTICE TO MARINERS

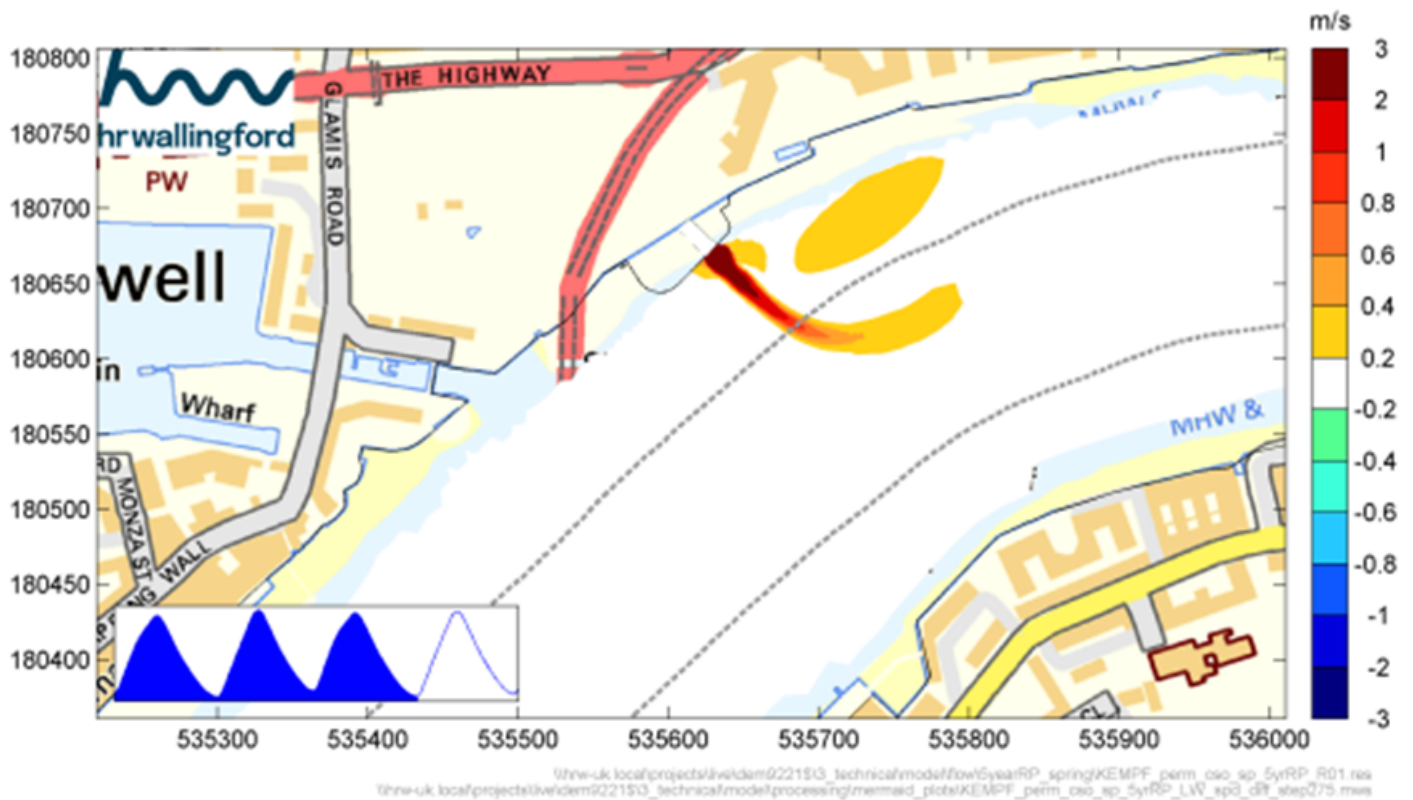


Figure B.150: 5 year RP event spring tide current differences at LW slack

Source: HR Wallingford Ltd

Telephone calls, VHF radio traffic, CCTV and radar traffic images may be recorded in the VTS Centre





# M57-24

Cathryn Spain, Senior Harbour Master

Published: 05/08/2024

Expires: 13/12/2024

Lower Pool



## King Edward Memorial Park CSO Diversion

### NOTICE TO MARINERS

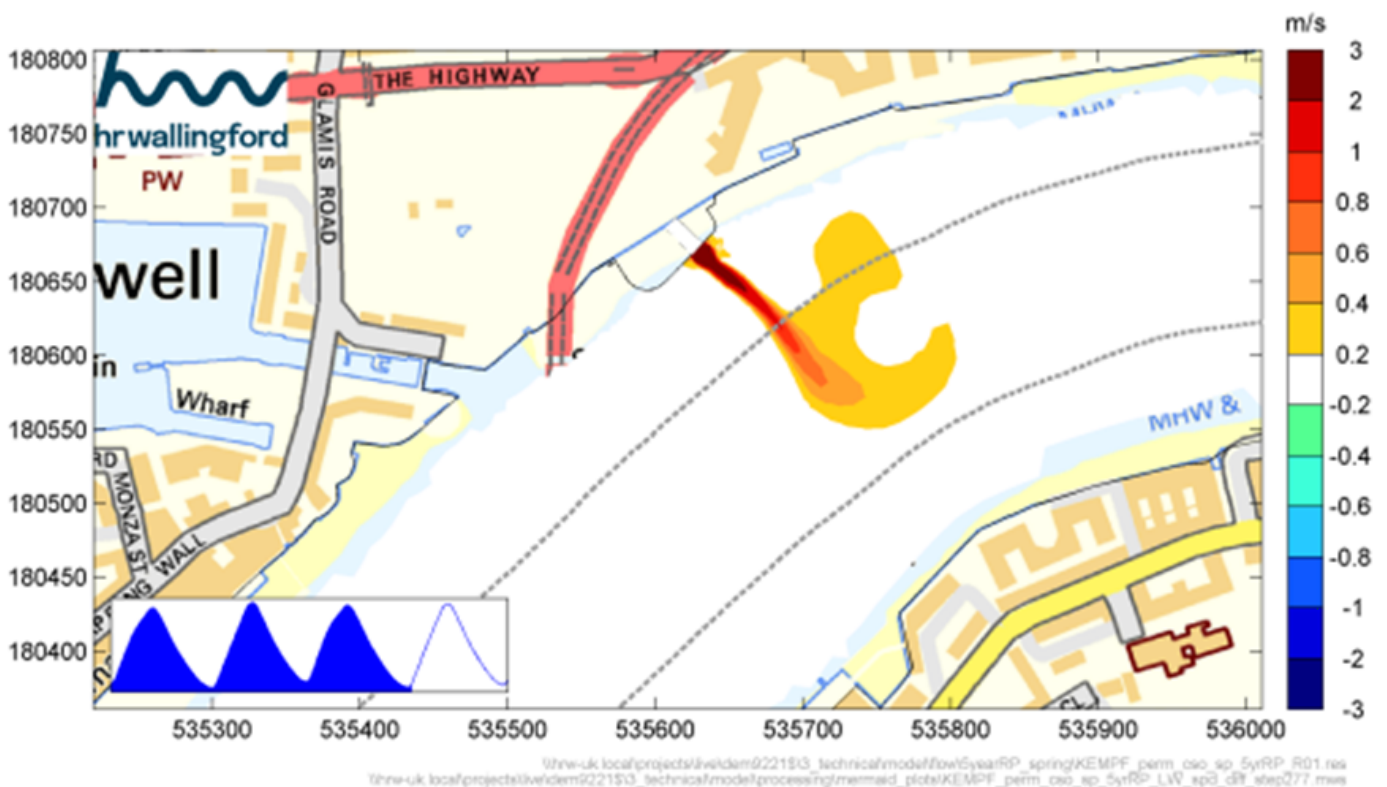


Figure B.152: 5 year RP event spring tide current differences, 20 mins after LW slack

Source: HR Wallingford Ltd

Telephone calls, VHF radio traffic, CCTV and radar traffic images may be recorded in the VTS Centre

