

001° 16.200' E

001° 16.800' E

001° 17.400' E

001° 18.000' E

001° 18.600' E

7250 Soundings taken on 27th May, 2021
Includes UKHO NtM 3589 of 2021

The SW Sunk Swatchway

2021

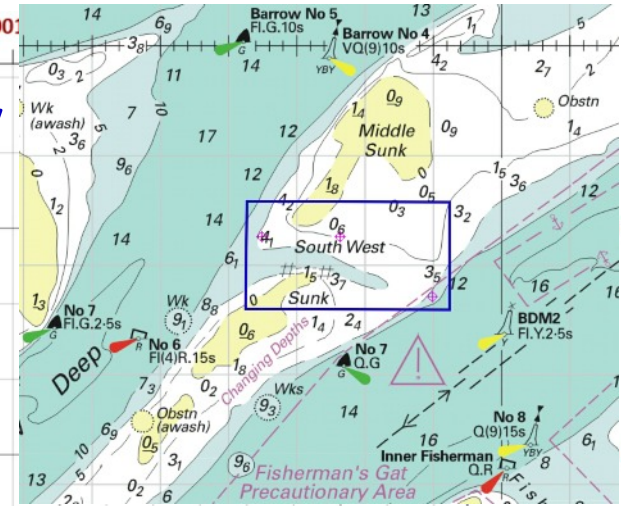
51° 38.700' N

51° 38.400' N

51° 38.100' N

51° 37.800' N

51° 37.500' N



51° 38.100' N

51° 37.800' N

51° 37.500' N

Depths in metres reduced to chart datum using observed tide data courtesy of and from the Port of London Authority.
 Caution: soundings taken on leisure equipment. Whilst every care has been taken in the preparation of this data, it cannot be guaranteed that these depths will remain.
 Navigators should consider the suitability of the waypoints for their own use.

Waypoints: West Side: 51°38'.300N, 001°16'.500E Centre: 51°38'.250N, 001°17'.600E East Side: 51°37'.700N, 001°19'.000E

West Rhumb Line 0.69nm @ 094/274 Degrees True East Rhumb Line 1.03nm @ 122/302 Degrees True