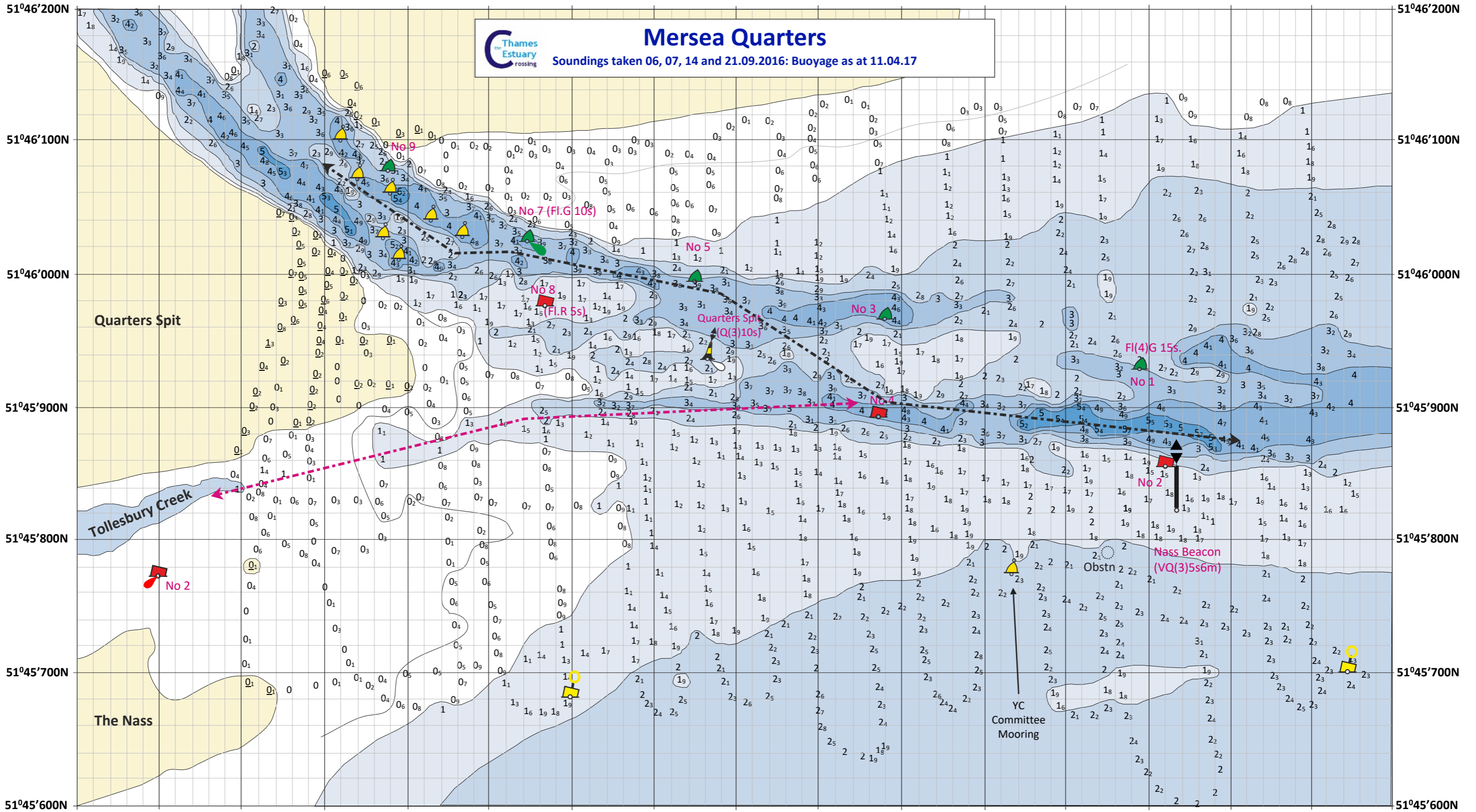


000°53'500E 000°53'600E 000°53'700E 000°53'800E 000°53'900E 000°54'000E 000°54'100E 000°54'200E 000°54'300E 000°54'400E 000°54'500E 000°54'600E 000°54'700E 000°54'800E 000°54'900E 000°55'000E 000°55'100E



**Thames Estuary Crossing**  
**Mersea Quarters**  
 Soundings taken 06, 07, 14 and 21.09.2016: Buoyage as at 11.04.17

Reduced to Chart Datum courtesy of data from the Port of London Authority. Positions refer to the WGS84 datum. Soundings taken on leisure equipment and whilst every precaution has been taken, no guarantee can be given that these depths will remain.

←-----→ Recommended route for deep draught vessels into Mersea at LWS.  
 ←-----→ Recommended route for vessels into and out of Tollesbury

Obstn ED is shown on Admiralty Charts at the moment but its position and existence has been established.

Quarters 2017 V2 © R. Gaspar 2017

- Drying
- 0 to 1 metre
- 1 to 2 metres
- 2 to 3 metres
- 3 to 4 metres
- 4 to 5 metres
- + 5 metres