

London Array Offshore Wind Farm (Outer Thames Estuary)



Notice to Mariners 07/2023 Rev 2

Cable Replacement Operations

CLV: NP-459

Date of Notice:

09/08/2023

Please promulgate the following as a Notice to Mariners

All mariners are advised that the Cable Lay Vessel (CLV) "NP-459" will be onsite from 09th August 2023 for approximately 3 to 4 weeks to carry out cable repair operations at the following location H15-I15 cable within the London Array Wind Farm.

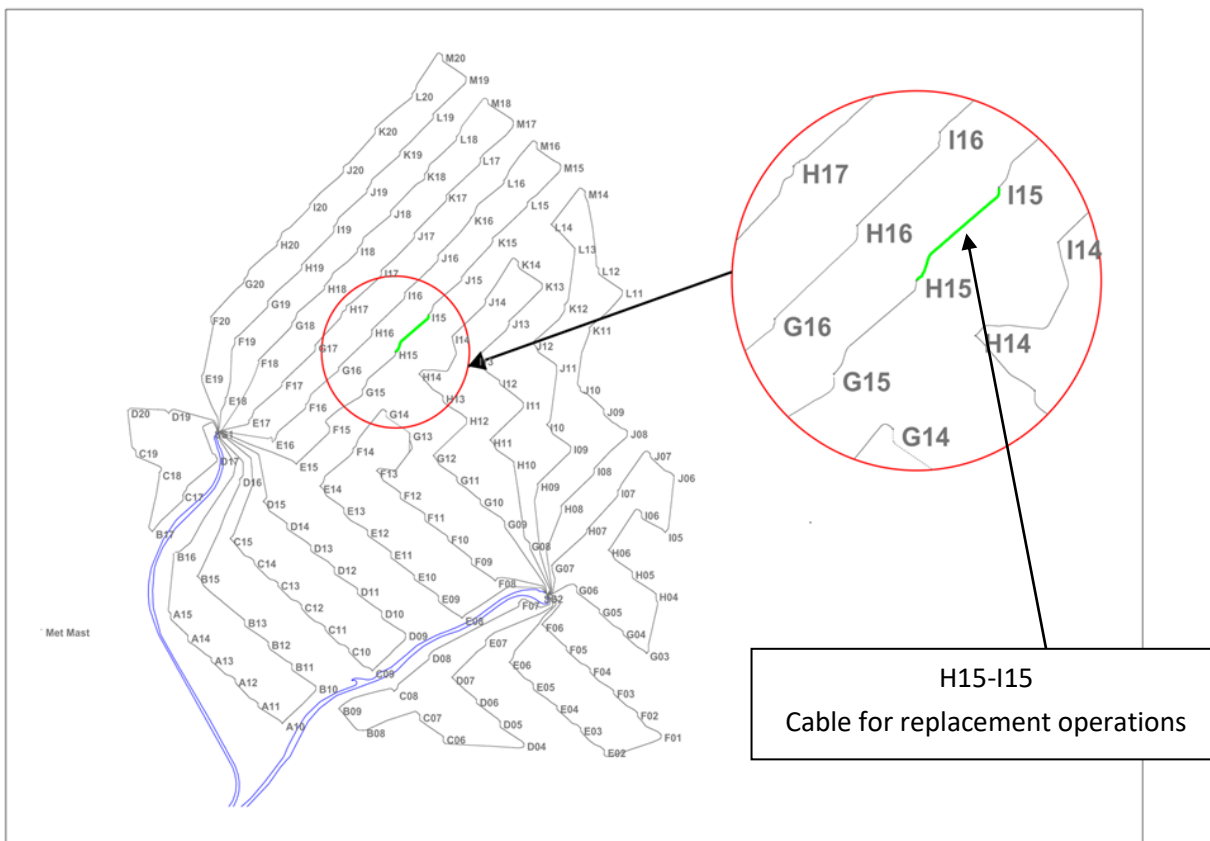


Figure 1: Cable Work Location

For additional information please contact the Duty Marine Coordinator.

01843 855 795 londonarray.marine.coordinators@londonarray.com

London Array Limited, Port of Ramsgate, Military Road, Ramsgate, CT11 9LG.



London Array Offshore Wind Farm (Outer Thames Estuary)



The barge will utilise a variety of systems and techniques to perform the works.

- Cable Extraction using Mass Flow (MFE) techniques
- Cable Installation
- Cable Burial using Mas Flow (MFE) techniques
- Anchor operations
- Diving Operations

These vessels will be supported by three tugs (AHTs) and one Crew Transfer Vessel (CTV):

- AHT #1: Foxtrot
- AHT #2: Forth Warrior
- AHT #3: NP-518
- CTV #1: NR Jaguar
- Accommodation Vessel: Sea Goldcrest

Cable Lay/Joining Vessel: NP-459

The NP-459 will be supported by Tugs and a Crew Transfer Vessel (CTV). The Tugs will perform anchor handling operations.

The Barge will conduct the cable replacement work, including Cable Extraction and Installation. Where required diving operations will also be undertaken from the barge to support the works.



Call Sign: PCSA
MMSI: 244193000
Mobile: +31 6 21 903 860
Length: 82.50m
Breadth: 27.00m

Conducting the following operations:

- Cable Extraction
- Cable Installation
- Diving
- Crane

For additional information please contact the Duty Marine Coordinator.

01843 855 795 londonarray.marine.coordinators@londonarray.com

London Array Limited, Port of Ramsgate, Military Road, Ramsgate, CT11 9LG.



London Array Offshore Wind Farm (Outer Thames Estuary)



AHT #1: Neptune Foxtrot

The AHT Neptune Foxtrot will perform Towing and Anchor Handling operations for the duration of the works. This vessel will be operating along the complete cable route supporting the replacement/installation operations as required.



Call Sign: PHSF
MMSI: 244184000
IMO: 6905449
Mobile: +31 6 319 746 20
Length: 32.0m
Breadth: 9.0m

Conducting the following operations:

- Towing
- Anchor handling

AHT #2: Forth Warrior

The AHT Forth Warrior will perform Anchor Handling operations for the duration of the works. This vessel will be operating along the complete cable route supporting the replacement/installation operations as required.



Call Sign: 2JHR8
MMSI: 235116011
IMO: 9803742
Length: 27.3m
Breadth: 11.5 m

Conducting the following operations:

- Anchor handling

For additional information please contact the Duty Marine Coordinator.

01843 855 795 londonarray.marine.coordinators@londonarray.com

London Array Limited, Port of Ramsgate, Military Road, Ramsgate, CT11 9LG.



London Array Offshore Wind Farm (Outer Thames Estuary)



AHT #3(Burial): NP-518

The NP-518 will perform Mass Flow De-Burial/Burial operations for the duration of the works. This vessel will be operating along the complete cable route supporting the replacement/installation operations as required.



Call Sign: PEYU
MMSI: 245916000
ISO: 986522
Mobile: +31 6 25 219 768
Length: 27.0m
Breadth: 12.0 m

Conducting the following operations:

- De-Burial
- Burial

Support Vessels

The NR Jaguar will be supported by one crew transfer vessel (CTV).

Crew Transfer Vessel: NR Jaguar



Call Sign: 2FSC9
MMSI: 235093757
IMO: NA
Length: 20.2m
Breadth: 6.5m
Draft: 1.8m
Mobile: +44 (0) 7873 322198

For additional information please contact the Duty Marine Coordinator.

01843 855 795 londonarray.marine.coordinators@londonarray.com

London Array Limited, Port of Ramsgate, Military Road, Ramsgate, CT11 9LG.



London Array Offshore Wind Farm (Outer Thames Estuary)



Accommodation Vessel: Sea Goldcrest



Call Sign: V7A6019
MMSI: 538010425
IMO: 9692612
Length: 65.9m
Breadth: 13.2m
Draft: 4.9m
Mobile: +47 90167528
Sat: +47 23676456

For additional information please contact the Duty Marine Coordinator.

01843 855 795 londonarray.marine.coordinators@londonarray.com

London Array Limited, Port of Ramsgate, Military Road, Ramsgate, CT11 9LG.



London Array Offshore Wind Farm (Outer Thames Estuary)



Planned Restricted Access Zones

The works are expected to commence on the 09th August 2023 on cable H15-I15 and shall continue until the project is complete, expected duration 3-4 weeks.

Vessel Zone

The NP-459 is an anchored vessel deploying between six and eight anchors with wires of up to 1000 m from the anchor. Each anchor shall be marked with a can buoy as shown below in figure 2 by the yellow "pennant buoy." If the anchor wire crosses other subsea assets an additional buoy will be deployed as shown below by the orange "midline buoy."

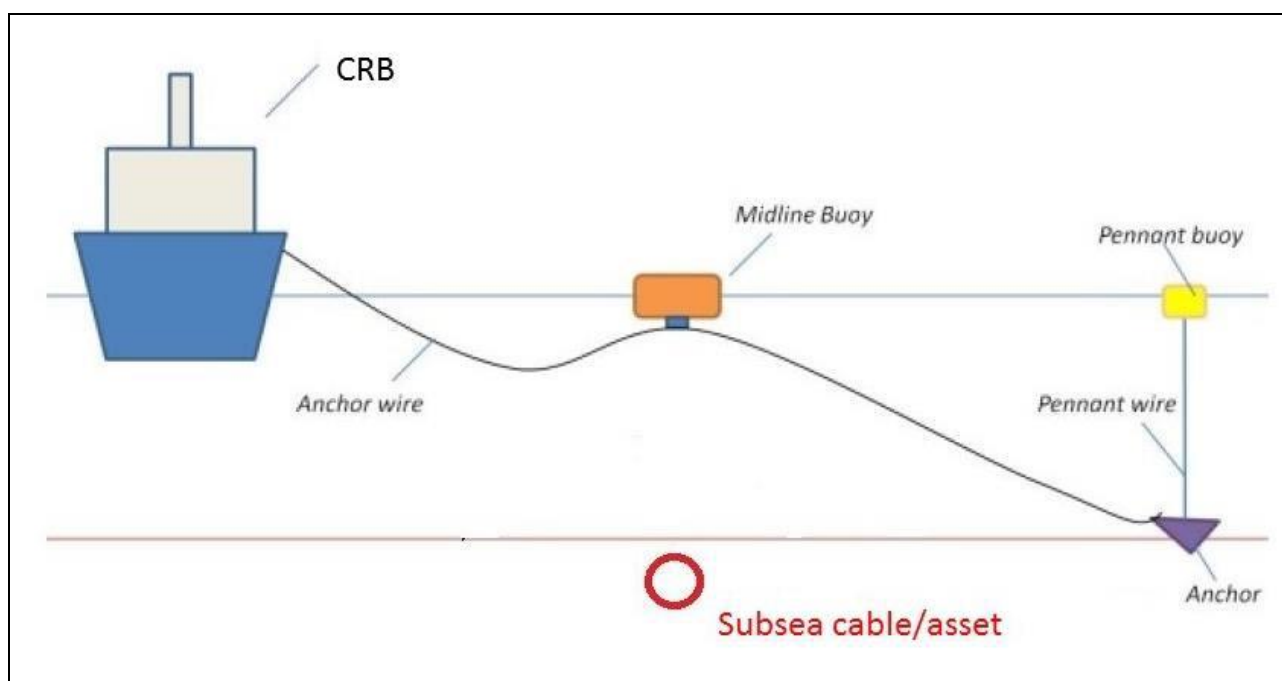


Figure 2 (Graphic to show typical anchor wire arrangement)

A 1250m radius restricted zone will be put in place centred on the vessel. These restricted zones will be in place when the vessels are operational, during inter field transit and port calls. If access is required to this zone for non-project traffic, authorisation must be requested from the Briggs Coordinator or the respective vessel/barge.

The Mooring will consist of 8 x 7-tonne Delta Flipper anchors deployed on up to 1000m wire from the barge centre.

Each anchor will be marked using a yellow can buoy complete with radar reflector and yellow flashing light 3sec delay.

For additional information please contact the Duty Marine Coordinator.

01843 855 795 londonarray.marine.coordinators@londonarray.com

London Array Limited, Port of Ramsgate, Military Road, Ramsgate, CT11 9LG.



London Array Offshore Wind Farm (Outer Thames Estuary)



Diving Zones

Prior to commencing diving operations, notifications will be transmitted via VHF channel 16 to all local traffic, providing the following information:

- Location where diving will commence.
- Implementation of additional 500m Diver Exclusion Zone.

If required, the Barge can be contacted directly on channel 16 for further information relating to activities currently being undertaken.

Accommodation Vessel Zone

The Sea Goldcrest is an accommodation vessel supporting operations. A 500m radius restricted zone will be put in place centred on the vessel. The vessel will be anchored either:

- South of the Wind Farm between Foulger's Gat and Fisherman's Gat (Area #1)
- North of the Wind Farm (Area #2)

These restricted zones will be in place.

When the vessel is at anchor, the anchor spread will consist of up to two anchors extending approximately 150m from the bow and stern. It should be observed that neither anchor has surface buoys deployed.

For additional information please contact the Duty Marine Coordinator.

01843 855 795 londonarray.marine.coordinators@londonarray.com

London Array Limited, Port of Ramsgate, Military Road, Ramsgate, CT11 9LG.

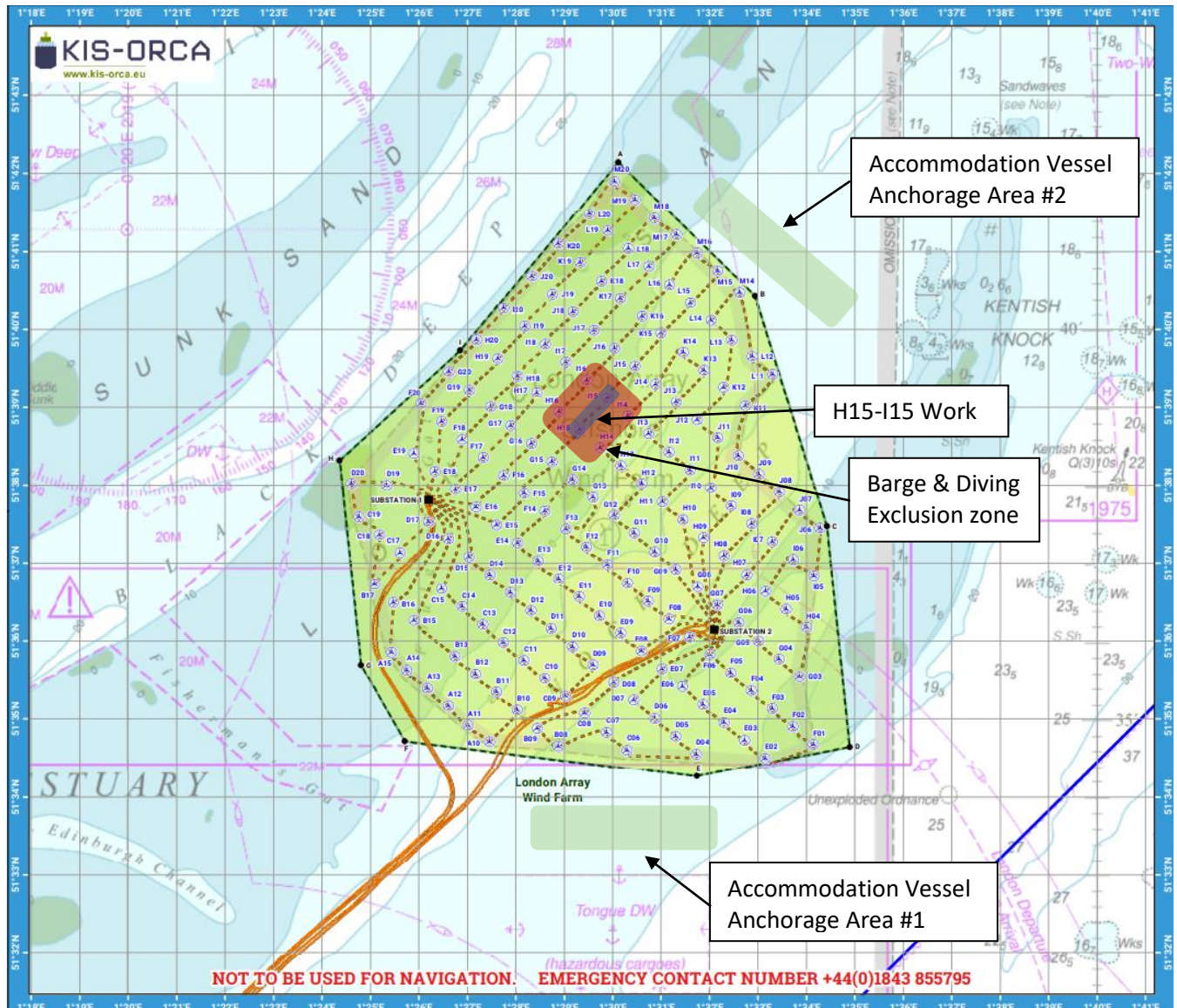


London Array Offshore Wind Farm (Outer Thames Estuary)



Overview of Works Chart

The following chart available from “Kingfisher Information: WWW.kis-orca.org” has been updated to provide approximately information for vessel locations and works area and exclusion zones.



For additional information please contact the Duty Marine Coordinator.

01843 855 795 londonarray.marine.coordinators@londonarray.com

London Array Limited, Port of Ramsgate, Military Road, Ramsgate, CT11 9LG.

