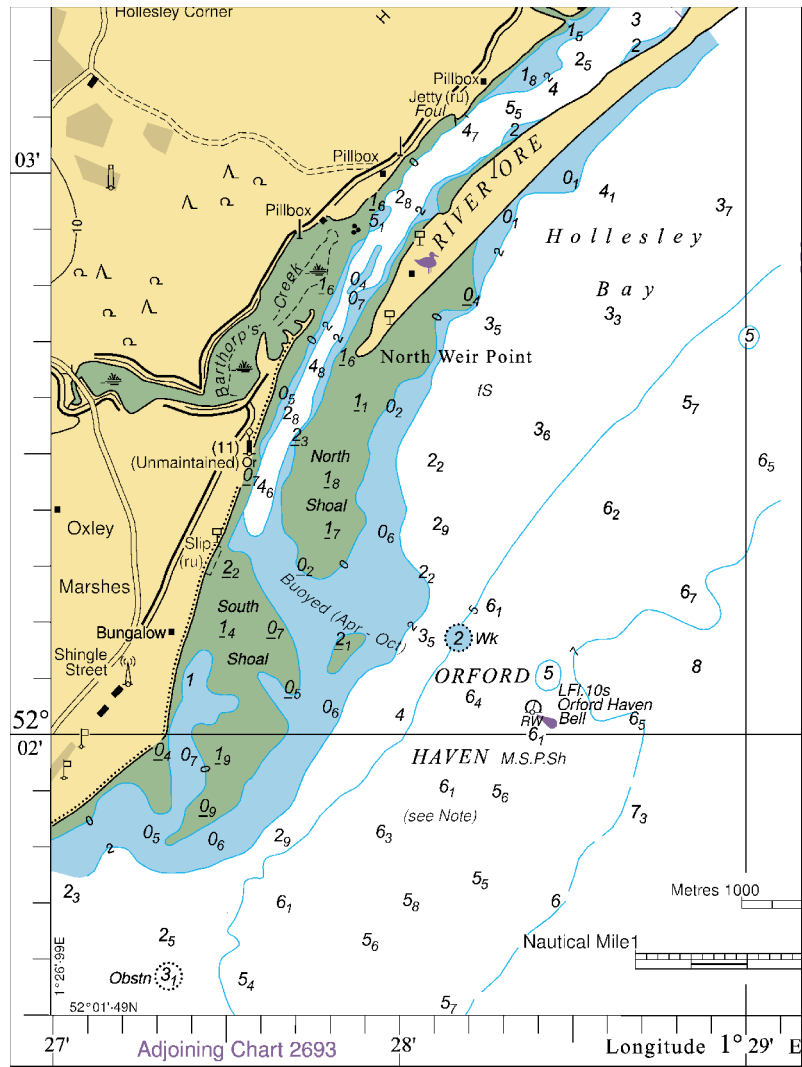


To accompany Notice to Mariners 2742/2014. Image Size (mm) 140.7 by 104.6



Block for Chart No 2695

2742* ENGLAND - East Coast - Orford Haven - Depths. Drying heights. Drying contours.

Coastline.

Slipway.

Source: Trinity House

(SEP: 2014000086166 - 1).

Chart 2693 (INT 1570) [previous update 2499/14] ETRS89 DATUM

Insert drying height, 0.2, and extend 0m low water line SW to enclose 52° 02' 30"N., 1° 27' 73"E.

drying height, 2.1, enclosed by 0m low water line (a) 52° 02' 17"N., 1° 27' 84"E.

Delete depth, 0.4, close N of: (a) above

Chart 2695 (panel C, Rivers Ore and Alde) [previous update 1986/14] ETRS89 DATUM

Insert the accompanying block, showing amendments to depths,

drying heights, drying contours, coastline and slipway, centred

on: 52° 02' 3"N., 1° 28' 00"E.